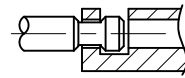


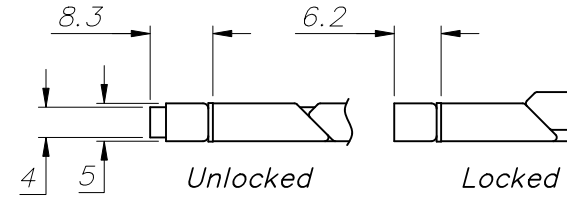
NOTES:

- 1- ALL DIMENSIONS ARE IN MM.
- 2- MATERIAL:
 - a) WEDGES AND SHAFT ARE AL6061-T6.
 - b) SCREW, PLAIN WASHER, LOCK WASHER AND SPIRAL PIN ARE CORROSION RESISTANT STEEL.
- 3- FINISH:
 - a) WEDGES AND SHAFT: SEE TABLE 1.
 - b) SCREW, PLAIN WASHER, LOCK WASHER AND SPIRAL PIN: PASSIVATED IN ACCORDANCE WITH AMS2700F.
- 4- WEIGHT IS INDICATED IN TABLE 2.

COMPUTER GENERATED DRAWING
MANUAL CHANGES PROHIBITED

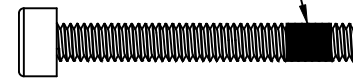


DETAIL "H"
Captive Screw



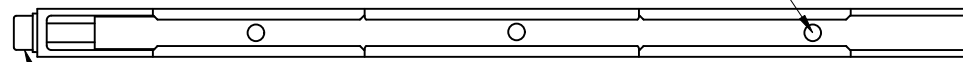
DETAIL "K"
Lock Indication

Chemical Coating
For Self locking



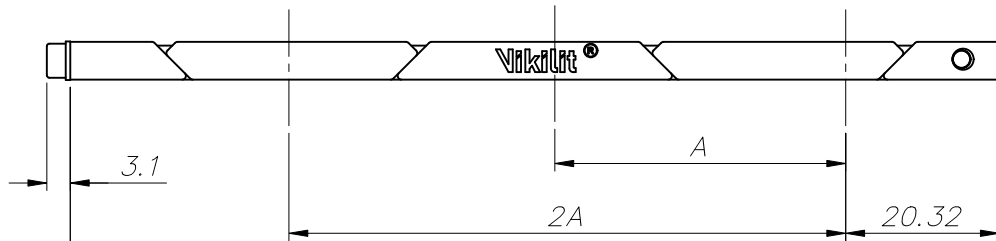
DETAIL "L"
Self Locking Option

3X MOUNTING HOLES
(SEE MOUNTING OPTIONS)

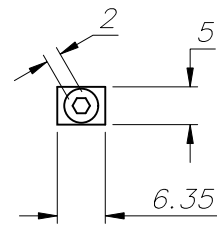
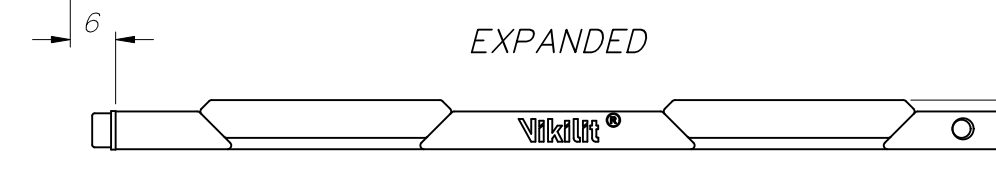


M2.5 HEX SOCKET HEAD SCREW
RECOMMENDED TORQUE: 0.8Nm MAX.

RELAXED

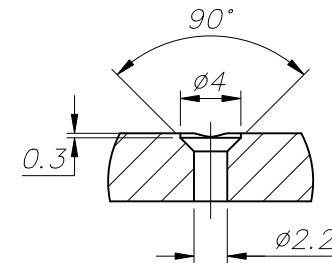


EXPANDED

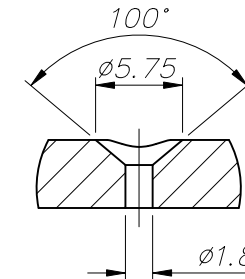


DETAIL "HM2"
M2 HELICOIL INSERT
Scale 2:1

6.5 MAX.
(5.75 RECOMMENDED)



DETAIL "HV3"
CSK-THRU Hole
Scale 2:1



DETAIL "HV2"
CSK-THRU Hole
Scale 2:1

REVISIONS				
ZONE	REV.	DESCRIPTION	DATE	APPROVED
	1	PROTOTYPE	13.09.2019	
	5	ADDED UNIFIED THREAD OPTION CHANGED PASSIVATION STANDARD ADDED HEX SOCKET WIDTH	21.03.2024	

TABLE 2

ASSEMBLY LENGHT CODE	L±1	A	WEIGHT (gr)
072*	72.12	11.43	6.1
085*	84.82	17.78	7.1
099	97.52	24.13	8.1
112	110.22	30.48	9.0
125	122.92	36.83	10.0
138	135.62	43.18	11.0
150	148.32	49.53	11.9

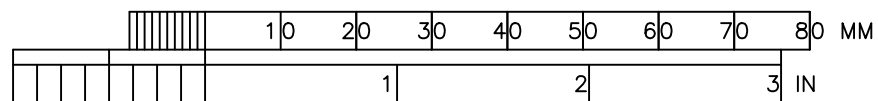
*: THREE WEDGE DESIGN

TABLE 1

Options: **V635LP - B - H - C - 125 - M20 - N**

MANUFACTURER TYPE CODE	_____
No Lock Indicator	_____ B
Lock Indicator	_____ (See Detail K) K
Standard Screw	_____ D
Captive Screw	_____ (See Detail H) H
Black Anodize per MIL-A-8625 Type II, Class 2	_____ A
Hard Black Anodize per MIL-A-8625 Type III, Class 2	_____ HA
Electroless Nickel per MIL-C-26074 Class 4, Grade B, Bright	_____ EN
Chromate per MIL-DTL-5541, Class 1A, Yellow	_____ C
Assembly Lenght Code	_____ (See Table 2)
M2.5x0.45 Tapped Hole	_____ M25
M2x0.4 Tapped Hole	_____ M20
Thru Hole (Detail "HV2")	_____ (See Detail HV2) HV2
Thru Hole (Detail "HV3")	_____ (See Detail HV3) HV3
M2 HELICOIL INSERT	_____ (See Detail HM2) HM2
2-56 Tapped Hole	_____ UN2
0-80 Tapped Hole	_____ UN0
Self Locking Patch	_____ (See Detail L) L
None	_____ N

PRINTS OF THIS DRAWING MAY BE REDUCED IN SIZE
TO COMPARE WITH ORIGINAL , CHECK WITH SCALE BELOW.



UNLESS OTHERWISE SPECIFIED DIMENSIONS ARE IN MM		CONTRACT NO. --		Bilkent Cyberpark, Cyber Plaza B Blok, No:216 Çankaya/Ankara	
TOLERANCES ON		DRAFTS			
FRACTIONS ±		DFT SUPV		V635LP SERIES	
GENERAL X.X ±0.2		ENGR			
X.XX ±0.10		CHECK			
REMOVE ALL BURRS		APPD ME			
MATERIAL:		EE		SIZE FSCM NO. DWG NO. REV. A3 -- HARP-VK-104 5	
SEE NOTE 2		STAFF ENGR.			
SEE NOTE 3		QA/QC			
FINAL PROTECTIVE FINISH:		MFG(FAB)			
NEXT ASSY	USED ON	PROD ENG		SCALE 1/1 UNIT mm SHEET 1 OF 1	
APPLICATION					