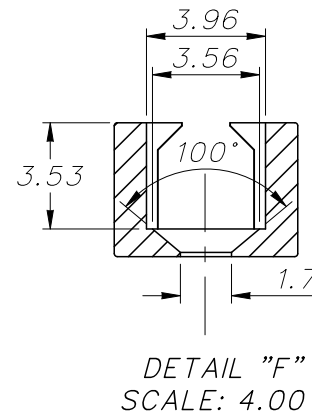
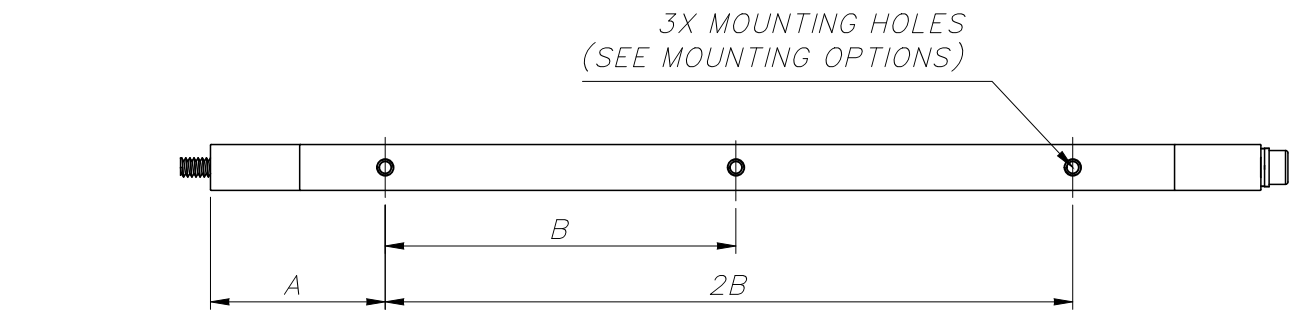
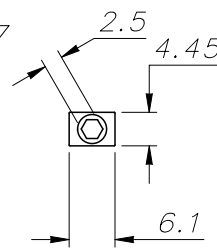
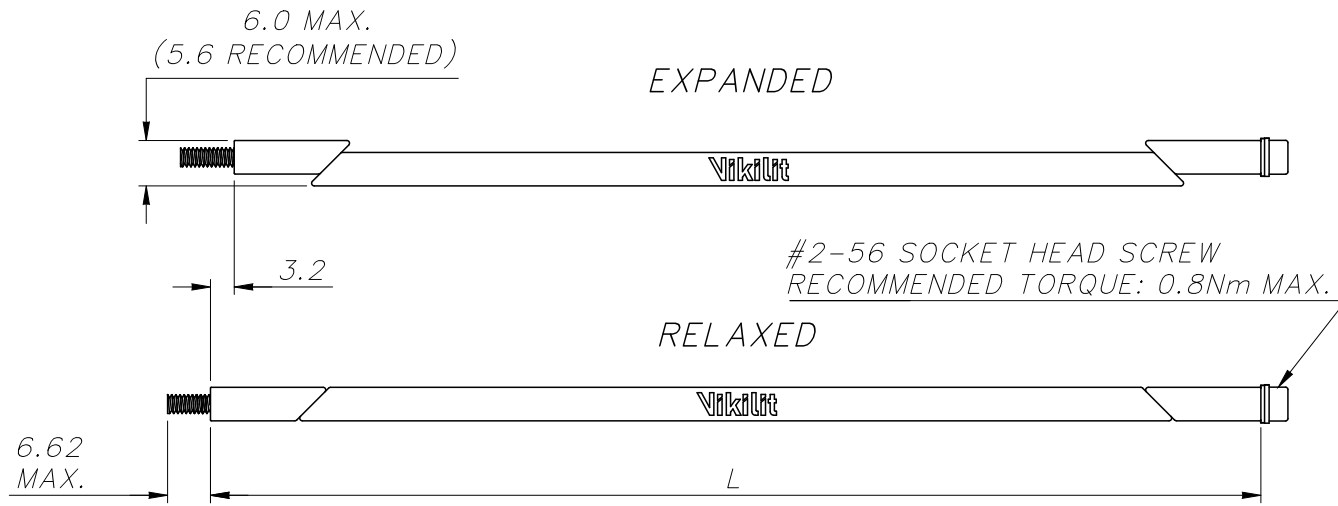
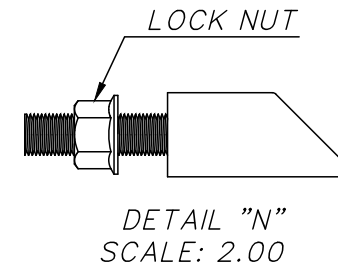
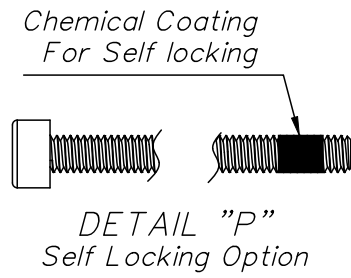


COMPUTER GENERATED DRAWING
MANUAL CHANGES PROHIBITED

NOTES:

- 1- ALL DIMENSIONS ARE IN MM.
- 2- MATERIAL:
- WEDGES: AL6061-T6.
- SCREW, PLAIN WASHER, LOCK WASHER, LOCK NUT, HELICAL INSERT: CORROSION RESISTANT STEEL.
- 3- FINISH:
- WEDGES: SEE TABLE 1.
- SCREW, PLAIN WASHER, LOCK WASHER, LOCK NUT AND HELICAL INSERT: PASSIVATED IN ACCORDANCE WITH AMS2700F.
- 4- WEIGHT IS INDICATED IN TABLE 2.



REVISIONS				
ZONE	REV.	DESCRIPTION	DATE	APPROVED
	1	PROTOTYPE	11.12.2020	
	6	CHANGED NOTE 2 AND NOTE 3	07.08.2024	

TABLE 1

VS610 - 4.8 - LM25 - N - P

Options:

MANUFACTURER TYPE CODE _____

Assembly Length Code _____ (See Table 2)

Black Anodize per MIL-A-8625 Type II, Class 2 _____ A

Hard Black Anodize per MIL-A-8625 Type III, Class 2 _____ HA

Electroless Nickel per MIL-C-26074 Class 4, Grade B, Bright _____ EN

Chromate per MIL-DTL-5541, Class 1A, Yellow _____ L

Mounting Options

M2.5x0.45 Tapped Hole _____ M25

M2.0x0.40 Tapped Hole _____ M20

Thru Hole _____ (See Detail F) _____ F

2-56 Tapped Hole _____ U2

0-80 Tapped Hole _____ U0

Lock Nut _____ (See Detail N) _____ N

None _____

Self Locking Patch _____ (See Detail P) _____ P

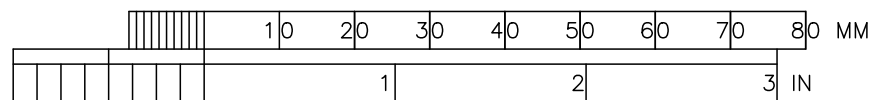
None _____

TABLE 2

ASSEMBLY CODE	L±1	A	B	WEIGHT (gr)
2.00*	50.80	17.78	15.24	4.3
2.60*	66.04	24.13	17.78	5.5
2.80	71.12	24.13	11.43	5.8
3.20	81.28	24.13	16.51	6.5
3.25	82.55	24.13	17.15	6.7
3.80	96.52	24.13	24.13	7.6
4.30	109.22	24.13	30.48	8.5
4.80	121.92	24.13	36.83	9.4
5.30	134.62	24.13	43.18	10.3
5.50	139.70	23.24	45.72	10.6
5.80	147.32	24.13	49.53	11.2
6.30	160.02	24.13	55.88	12.1
6.80	172.72	24.13	62.23	13.0
7.30	185.42	24.13	68.58	13.9
7.80	198.12	24.13	74.93	14.8

*2X MOUNTING HOLES

PRINTS OF THIS DRAWING MAY BE REDUCED IN SIZE TO COMPARE WITH ORIGINAL, CHECK WITH SCALE BELOW.



UNLESS OTHERWISE SPECIFIED DIMENSIONS ARE IN MM		CONTRACT NO. --		<p>Bilkent Cyberpark, Cyber Plaza B Blok, No:216 Çankaya/Ankara</p>	
TOLERANCES ON		DRAFTS			
FRACTIONS ± ANGLES ± 2°		DFT SUPV		<p>VS610 SERIES</p>	
GENERAL X.X ±0.2		ENGR			
X.XX ±0.10		CHECK			
REMOVE ALL BURRS		APPD ME EE			
MATERIAL:		STAFF ENGR.		SIZE FSCM NO. DWG NO.	
SEE NOTE 2		QA/QC		A3 -- HARP-VK-114	
FINAL PROTECTIVE FINISH:		MFG(FAB)		SCALE 1/1 UNIT mm	
SEE NOTE 3		PROD ENG		SHEET 1 OF 1	
NEXT ASSY	USED ON	APPLICATION		REV. 6	